

PAIRINGS® ENHANCEMENTS

NOOKS

Reference the Pairings price list for complete offering.

NOOKS

Nooks available in one (27" W), two (54" W) or three (81" W) seats with or without 8" or Tech arms. Three seat Nook not available with arms.



Nooks Back-to-Back ganged with ganging brackets; available in 1, 2 and 3 seats. Ordered as one complete model so materials will always line up.

Nooks Markerboard available in 24" W in Designer White HPL.

Nooks Low Storage Cubby available in 24" W in laminate and wood on one end.

Nooks Low Storage Cubby in 24" W on both ends. Available in laminate and wood.

Nooks Back-to-Back Markerboard (not shown) available in 48" W in Designer White HPL.

Nooks Back-to-Back Low Storage (not shown) available in 48" W in laminate and wood.

DETAILS

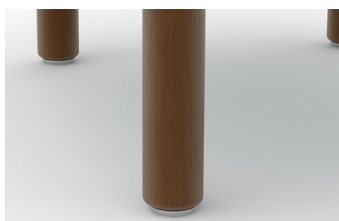


Worksurface extensions (36x60 and 36x72), on two and three seat Nooks are available at worksurface, counter and bar heights in TFL, HPL and Wood. Surfaces are supported with a Dock disc base. Reference the price list for complete information.

Monitor Mount available 2- & 3- seat Nooks. Monitor maxes: 50" Diagonal, Weight = 45 lbs.

LED Light available only on Nooks with 8" or Tech arm. Light sits 8" off the back of the arm.

WOOD LEGS



Opening on top privacy panel is 2" H to allow light to come through.

Finished round wood leg available on all existing and new Pairings models in all standard wood finishes. Upcharge applies.