

Alterna™

Modular Caseworks

Alterna™

Modular Caseworks

As healthcare continues to advance, the needs and expectations of patients and caregivers are changing, altering the course of traditional healthcare environments.

These changes are what has driven the development of Alterna, designed to support this evolving landscape with seamless and durable solutions for the entire facility – from public zones, to clinical areas, to workspaces and more.

The high quality construction of Alterna means it's dependable throughout the life of the product, and the broad offering of finishes and materials make it easy to specify for new construction or renovations to existing facilities.

Alterna is caseworks built to support the full facility.











Alterna™

Benefits of Modular Caseworks

- Specify for all areas of the facility with a broad offering of standard product models.
- Thanks to simple installation, components are removed, reconfigured and repurposed should needs change.
- Designed to disassemble and reattach, so cabinets aren't damaged when moved.
- Upper and wall-mount cabinets are engineered to hang from z-brackets, eliminating the need for wall blocking.
- Cabinets deliver fully assembled for quick and easy installation.
- All base and storage cabinets come with adjustable levelers to quickly level on un-even floors.
- Cabinets come in multiple width, depth and height options for easy configuration to specific needs.
- Streamline your project schedule by having modular caseworks order and deliver with standard furnishings.
- Modular caseworks can be registered as a capital asset vs. a fixed asset.

Alterna™

Solutions

- Registration and check-in
- Waiting rooms
- Lobbies and lounges
- Nurse Stations
- Infusion bays
- In-room headwalls and footwalls
- Respite spaces
- Cafes, cafeterias and kitchenettes
- Private offices
- Administrative spaces

Alterna™

Statement of Line

- Base cabinets
- Wall hanging base cabinets
- Sink cabinets, ADA sink cabinets, sinks and faucets
- Upper cabinets
- Work surfaces and bracketry
- Storage cabinets
- Lockers
- Benches
- Wall panels
- Filler panels

Alterna™

Features & Options

Storage Construction Details

- No exposed fasteners
- V-Fold drawer construction
- 4" Plinth base detail



Keyless Lock Option



Z-Clip Wall Attachment

Chassis

- TFL with .5 MM edge banding.
- Chassis interior matches exterior material.

Doors and Drawers

- Laminate with 2MM edge banding.
- Door interior matches door exterior material.
- Drawer interiors are white.
- Drawers feature full extension and access to the entire drawer.

Adjustable Glides

- Standard for added flexibility and stability with 1 1/4" adjustment.

Adjustable or Fixed Shelves

- Adjustable or fixed shelves available on all open cabinets.
- Base door cabinets are optional with or without shelves.
- Upper cabinets come with adjustable shelves only.

Flat or Sloped Top

- Available on upper and storage cabinets for cleanability and local codes.

Locks

- Non-locking is standard
- Keyed random, keyed specific and keyless options with combination keypad are available.

Coat Rod, Coat Hooks & Wardrobe Rail

- Available for storage of personal items.

Concealed Hinge (standard)

- Concealed and opens 120 degrees.

Pivot Hinge (optional)

- Partially exposed and opens 270 degrees.

Solid Surface Worksurfaces

- Available in 3 standard Wilsonart colors - Designer White, Frosty White & Antique White.
- All Corian colors are graded in.
- Overall thickness 1".

Laminate Worksurfaces

- Kimball solids and woodgrains, and Customer Specified Laminate (CSL) option available.
- Overall thickness 1 3/16".

Back & Side Splashes

- HPL Tops: Back and side splashes must be ordered separately and field installed.
- Solid Surface Tops: Available with or without integrated backsplash. Side splashes must be ordered separately and field installed.

Sinks

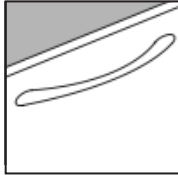
- Optional drop-in stainless steel or undermount stainless steel with drain with flat strainer included.
- Sink locations are available in 1" increments.

Faucets

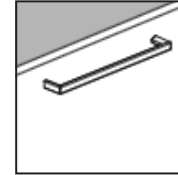
- Available in paddle handle or touchless sensor.

Alterna™

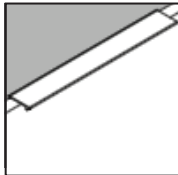
Features & Options



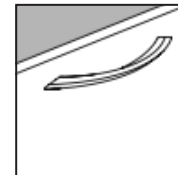
Curve Pull
Designer White / Cinder /
Platinum Metallic / Carbon Metallic /
Silver Pearl



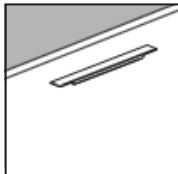
Mod Pull
Designer White / Cinder /
Platinum Metallic / Carbon Metallic /
Silver Pearl



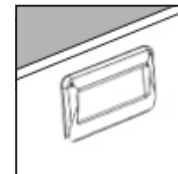
Linear Pull
Brushed Nickel / Polished Chrome /
Clear Anodized



Helix Pull
Designer White / Cinder /
Platinum Metallic / Carbon Metallic /
Silver Pearl



Trinity Pull
Designer White / Cinder /
Platinum Metallic / Carbon Metallic /
Silver Pearl



Inset Pull
Matte Nickel / Matte Chrome

Alterna™

Statement of Line

Base Cabinets

Types: Open, Door, Drawer/Door, 2-, 3-, 4-Drawer models

Depths: 19", 24"

Widths: 12", 15", 18", 21", 24", 30", 36"

Heights: 33", 35"

* Shelves are optional in open, door and drawer/door models

Base Sink Cabinets (not shown):

Types: Door, False Drawer with Door

Depths: 19", 24"

Widths: 24", 30", 36"

Heights: 33", 35"



Alterna™

Statement of Line

Wall Hanging Base Cabinets

Types: Open, Door, Drawer/Door, Sliding Door, 2- & 3-Drawer models

Depths: 14", 19"

Widths: 12", 15", 18", 21", 24", 30", 36"

Heights: 15", 24"

* Shelves are optional in open, door and drawer/drawer models



Wall Hanging Sink Cabinets:

Types: ADA/Angled, Door, False Drawer with Door

Depths: 19"

Widths: 24", 30", 36"

Heights: 24", 26"



Alterna™

Statement of Line

Upper Cabinets:

Style: Flat or Sloped Top

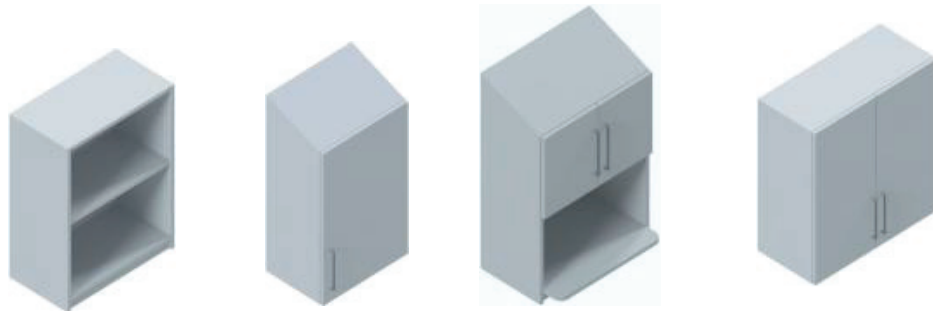
Types: Open, Door, Door with Open Shelf

Depths: 14"

Widths: 12", 15", 18", 21", 24", 30", 36"

Heights: 24", 30", 36"

* Door cabinets - 24" has one shelf | 30" has one shelf | 36" has 2 shelves



Alterna™

Statement of Line

Lockers:

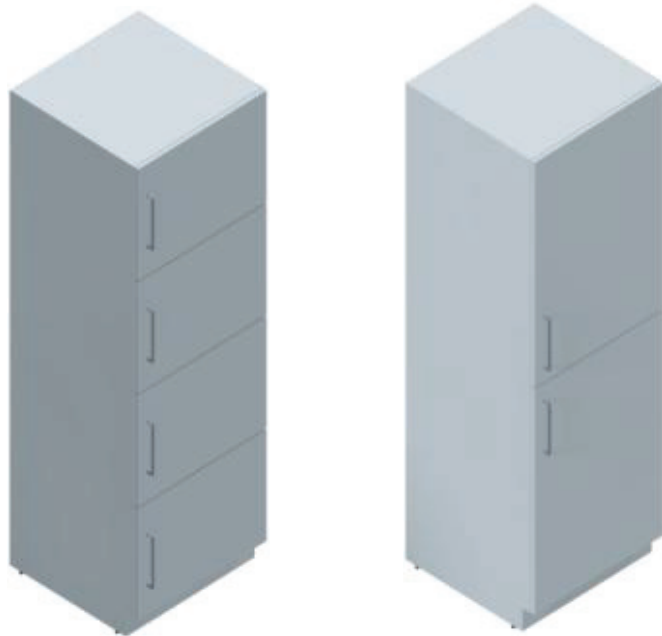
Style: Flat or Sloped Top

Types: 2 Door & 4 Door

Depths: 19", 24"

Widths: 12", 15", 18", 21", 24"

Heights: 60", 72", 78", 84"



Alterna™

Statement of Line

Storage Cabinets:

Style: Flat or Sloped Top

Types: Open or Door

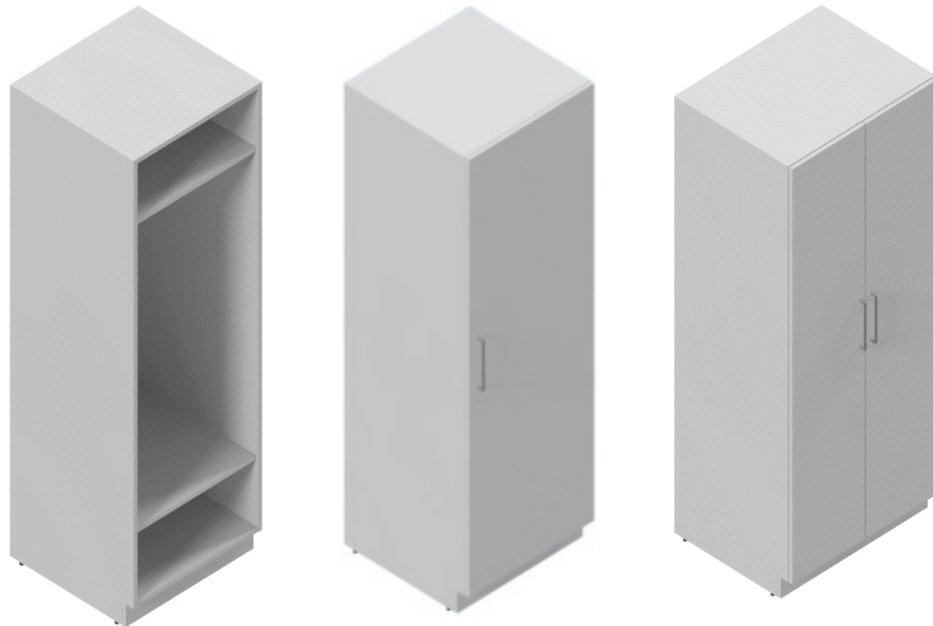
Depths: 19", 24"

Widths: 12", 15", 18", 21", 24", 30", 36"

Heights: 60", 72", 78", 84"

Options:

- Adjustable shelves; fixed shelves also available on Open models
- Coat hooks
- Coat rod-24"D models
- Wardrobe rail (front to back)-24"W models



Alterna™

Statement of Line

Double Sided Storage Cabinets:

Style: Flat or Sloped Top

Types: Open or Door

Depths: 37"

Widths: 15", 18", 21", 24"

Heights: 60"

Options:

- Coat hooks
- Coat rod
- Wardrobe rail (front to back)



Alterna™

Statement of Line

Media Cabinets:

Tops available in Laminate or Solid Surface
Includes TV Mount
30"W x 46"H



Bench Cabinets:

Open Front or Closed Front with Cushion Top
Widths: 30",36"



Alterna™

Statement of Line

Wall Panels:

Style: Flat or Sloped Top

Types: Laminate (TFL), Marker Board, Glass, Magnetic Glass

Sizes: 18"-60"W

18"-84"H



Divider Panels:

Available in Laminate (TFL)

Shown with open storage cabinet, bench, and media cabinet

