

Typical Physical Properties

Pattern	Content	Width & Weight	Repeat	Cleaning Code	Flammability CAL TB 117-2013	Wyzenbeek Abrasion Resistance	Colorfastness (Light) AATCC-16A	Crocking	Hydrolytic Stability ISO 1419 Method C
Balance	55% TPE 35% Polyester 10% Cotton	53" 14 oz/lin. yd.	6.75" w x 6.76" h	WS – Water and Solvents	Pass	200,000 double rubs	Class 5	Dry – Class 5 Wet – Class 5	Pass
Berkshire	55% TPE 35% Polyester 10% Cotton	54" 14 oz/lin. yd.		WS – Water and Solvents	Pass	200,000 double rubs	Class 5	Dry – Class 5 Wet – Class 5	Pass
Breeze	55% TPE 35% Polyester 10% Cotton	53" 14 oz/lin. yd.	6.75" w x 6.8" h	WS – Water and Solvents	Pass	200,000 double rubs	Class 5	Dry – Class 5 Wet – Class 5	Pass
California	55% TPE 35% Polyester 10% Cotton	54" 14 oz/lin. yd.		WS – Water and Solvents	Pass	500,000 double rubs	Class 5	Dry – Class 5 Wet – Class 5	Pass
Droplet	55% TPE 35% Polyester 10% Cotton	53" 14 oz/lin. yd.	9" w x 11" h	WS – Water and Solvents	Pass	200,000 double rubs	Class 5	Dry – Class 5 Wet – Class 5	Pass
Garden Party	55% TPE 35% Polyester 10% Cotton	53" 14 oz/lin. yd.	13.5" w x 13.5" h	WS – Water and Solvents	Pass	200,000 double rubs	Class 5	Dry – Class 5 Wet – Class 5	Pass
Harmony	55% TPE 35% Polyester 10% Cotton	53" 14 oz/lin. yd.	10.8" w x 12" h	WS – Water and Solvents	Pass	200,000 double rubs	Class 5	Dry – Class 5 Wet – Class 5	Pass
Holistic	55% TPE 35% Polyester 10% Cotton	53" 14 oz/lin. yd.	10.8" w x 8.28" h	WS – Water and Solvents	Pass	200,000 double rubs	Class 5	Dry – Class 5 Wet – Class 5	Pass
Ink-Gard™ Plus	55% TPE 35% Polyester 10% Cotton	54" 14 oz/lin. yd.		WS – Water and Solvents	Pass	500,000 double rubs	Class 5	Dry – Class 5 Wet – Class 5	Pass
Meditate	55% TPE 35% Polyester 10% Cotton	53" 14 oz/lin. yd.	13.5" w x 13.5" h	WS – Water and Solvents	Pass	200,000 double rubs	Class 5	Dry – Class 5 Wet – Class 5	Pass
Montana	55% TPE 35% Polyester 10% Cotton	54" 14 oz/lin. yd.		WS – Water and Solvents	Pass	500,000 double rubs	Class 5	Dry – Class 5 Wet – Class 5	Pass
Synergy	55% TPE 35% Polyester 10% Cotton	53" 14 oz/lin. yd.	9" w x 9.2" h	WS – Water and Solvents	Pass	200,000 double rubs	Class 5	Dry – Class 5 Wet – Class 5	Pass
Tranquil	55% TPE 35% Polyester 10% Cotton	53" 14 oz/lin. yd.	9" w x 13.7" h	WS – Water and Solvents	Pass	200,000 double rubs	Class 5	Dry – Class 5 Wet – Class 5	Pass

Features of EnviroLeather™

Durability and Performance

- Resists cracking, peeling and delamination
- Superior chemical resistance
- Stain resistant, easy to clean and disinfect
- Maintains tight, tailored look and resists sagging and wrinkling in field use
- Outstanding abrasion resistance and durability
- Designed for comfort
- Impervious to fluids

Environmental and Health Safety Benefits

- PVC-Free and passes CAL 01350 VOC emission test
- No flame retardants, bromine-free
- No plasticizers, phthalate-free
- No heavy metals
- Includes recycled and renewable content
- Animal friendly
- Free from harmful PFC's

Disinfecting / Cleaning Information

EnviroLeather™ utilizes a high tech polymer that results in excellent chemical resistance and cleanability. The product is inherently more stain resistant than vinyl.

Most stains can be cleaned using soap and water. For disinfecting we recommend a 20% (1:5) bleach solution.

Visit www.enviroleather.com for complete cleaning instructions and a list of cleaners and disinfectants that we have tested.

Antimicrobial Information

When cleaned properly EnviroLeather™ is inherently antimicrobial because it does not contain plasticizers or other additives that act as a food source for microbes. Therefore we do not add antimicrobial chemicals to our products (with the exception of the Montana Collection).

Kimball® Health

enviroleather™
by LDI 

benefits

PVC-Free Faux Leather Collection

Typical Physical Properties

Pattern	Content	Width & Weight	Repeat	Cleaning Code	Flammability CAL TB 117-2013	Wyzenbeek Abrasion Resistance	Colorfastness (Light) AATCC-16A	Crocking	Hydrolytic Stability ISO 1419 Method C
Balance	55% TPE 35% Polyester 10% Cotton	53" 14 oz./lin. yd.	6.75" w x 6.76" h	WS – Water and Solvents	Pass	200,000 double rubs	Class 5	Dry – Class 5 Wet – Class 5	Pass
Berkshire	55% TPE 35% Polyester 10% Cotton	54" 14 oz./lin. yd.		WS – Water and Solvents	Pass	200,000 double rubs	Class 5	Dry – Class 5 Wet – Class 5	Pass
Breeze	55% TPE 35% Polyester 10% Cotton	53" 14 oz./lin. yd.	6.75" w x 6.8" h	WS – Water and Solvents	Pass	200,000 double rubs	Class 5	Dry – Class 5 Wet – Class 5	Pass
California	55% TPE 35% Polyester 10% Cotton	54" 14 oz./lin. yd.		WS – Water and Solvents	Pass	500,000 double rubs	Class 5	Dry – Class 5 Wet – Class 5	Pass
Droplet	55% TPE 35% Polyester 10% Cotton	53" 14 oz./lin. yd.	9" w x 11" h	WS – Water and Solvents	Pass	200,000 double rubs	Class 5	Dry – Class 5 Wet – Class 5	Pass
Garden Party	55% TPE 35% Polyester 10% Cotton	53" 14 oz./lin. yd.	13.5" w x 13.5" h	WS – Water and Solvents	Pass	200,000 double rubs	Class 5	Dry – Class 5 Wet – Class 5	Pass
Harmony	55% TPE 35% Polyester 10% Cotton	53" 14 oz./lin. yd.	10.8" w x 12" h	WS – Water and Solvents	Pass	200,000 double rubs	Class 5	Dry – Class 5 Wet – Class 5	Pass
Holistic	55% TPE 35% Polyester 10% Cotton	53" 14 oz./lin. yd.	10.8" w x 8.28" h	WS – Water and Solvents	Pass	200,000 double rubs	Class 5	Dry – Class 5 Wet – Class 5	Pass
Ink-Gard™ Plus	55% TPE 35% Polyester 10% Cotton	54" 14 oz./lin. yd.		WS – Water and Solvents	Pass	500,000 double rubs	Class 5	Dry – Class 5 Wet – Class 5	Pass
Meditate	55% TPE 35% Polyester 10% Cotton	53" 14 oz./lin. yd.	13.5" w x 13.5" h	WS – Water and Solvents	Pass	200,000 double rubs	Class 5	Dry – Class 5 Wet – Class 5	Pass
Montana	55% TPE 35% Polyester 10% Cotton	54" 14 oz./lin. yd.		WS – Water and Solvents	Pass	500,000 double rubs	Class 5	Dry – Class 5 Wet – Class 5	Pass
Synergy	55% TPE 35% Polyester 10% Cotton	53" 14 oz./lin. yd.	9" w x 9.2" h	WS – Water and Solvents	Pass	200,000 double rubs	Class 5	Dry – Class 5 Wet – Class 5	Pass
Tranquil	55% TPE 35% Polyester 10% Cotton	53" 14 oz./lin. yd.	9" w x 13.7" h	WS – Water and Solvents	Pass	200,000 double rubs	Class 5	Dry – Class 5 Wet – Class 5	Pass

Features of EnviroLeather™

Durability and Performance

- Resists cracking, peeling and delamination
- Superior chemical resistance
- Stain resistant, easy to clean and disinfect
- Maintains tight, tailored look and resists sagging and wrinkling in field use
- Outstanding abrasion resistance and durability
- Designed for comfort
- Impervious to fluids

Environmental and Health Safety Benefits

- PVC-Free and passes CAL 01350 VOC emission test
- No flame retardants, bromine-free
- No plasticizers, phthalate-free
- No heavy metals
- Includes recycled and renewable content
- Animal friendly
- Free from harmful PFC's

Disinfecting / Cleaning Information

EnviroLeather™ utilizes a high tech polymer that results in excellent chemical resistance and cleanability. The product is inherently more stain resistant than vinyl.

Most stains can be cleaned using soap and water. For disinfecting we recommend a 20% (1:5) bleach solution.

Visit www.enviroleather.com for complete cleaning instructions and a list of cleaners and disinfectants that we have tested.

Antimicrobial Information

When cleaned properly EnviroLeather™ is inherently antimicrobial because it does not contain plasticizers or other additives that act as a food source for microbes. Therefore we do not add antimicrobial chemicals to our products (with the exception of the Montana Collection).

enviroleather™

by LDI

LDI Corporation 3560 Lafayette Road, Bldg. 2, Suite C, Portsmouth, NH 03801

Toll Free (866) 332-0700 | Fax (603) 436-1777 | www.enviroleather.com

To order memo samples for project use, please visit www.enviroleather.com

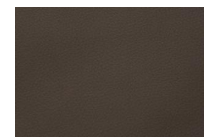
California



Lagoon 947



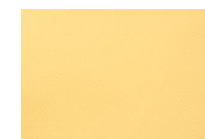
Snowy Owl 965



Mammoth 957



Pineapple 920



Golden Poppy 958



Linen 998



Solstice 982



Pumpkin 930



Adobe 932



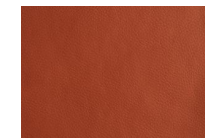
Desert 931



Camel 941



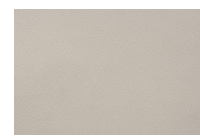
Cinnamon 979



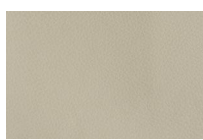
Bolero 986



White 970



Silver Lake 953



Misty Gray 939



Smokewood 937



Cross Grove 999



Bark 938



Olive 924



Pear 922



Mushroom 946



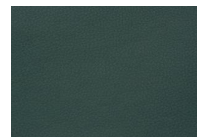
Flagstone 940



Pewter 942



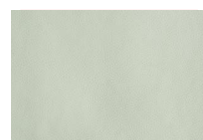
Storm 960



Juniper 952



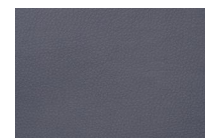
Sherwood 948



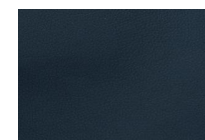
Rain 971



Bermuda 945



Grapevine 956



Navy 936

Ink-Gard Plus



Slate 611



Cotton 603



Haze 608



Olive Moss 609



Harvest 607



Saddle 616



Sterling 613

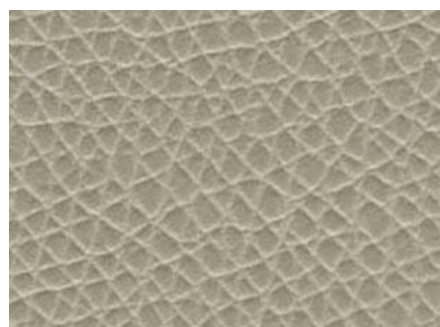


Deep Sea 604

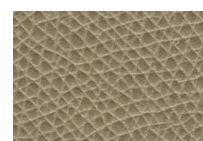


Weatherwood 615

Berkshire



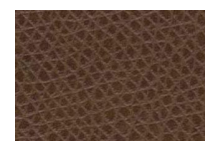
Alabaster 102



Coquina 105



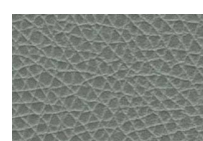
Pumice 104



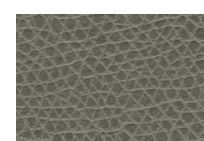
Soapstone 108



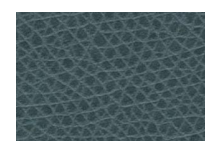
Basalt 109



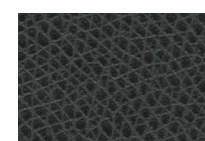
Shale 106



Claystone 103



Limestone 107



Granite 101

Additional colors are available. Please refer to the EnviroLeather™ website, www.enviroleather.com

Montana



Montana Moss 744



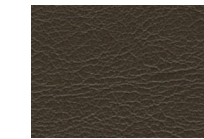
Gypsum White 712



Moccasin Trail 709



Ranchwood 736



Chocolate Moose 750



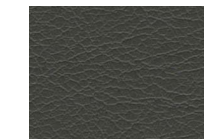
Bear Grass 746



TeePee 735



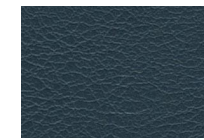
Quarry Rock 739



Charcoal 704



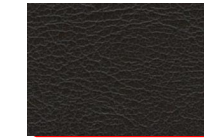
Blue Heron 740



Tribal Teal 738

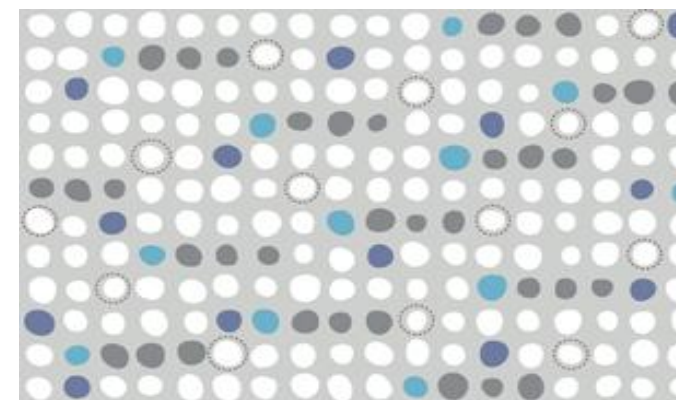


Grizzly Gray 752

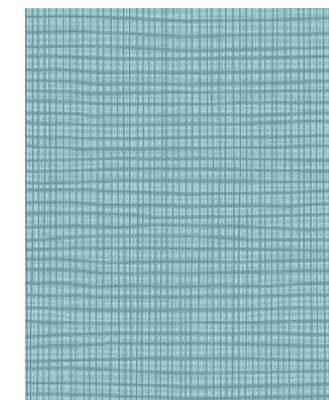


Rocky Mt. 707

Healing Essentials Collection



Droplet Reflection 3088



Meditate Bliss 3203



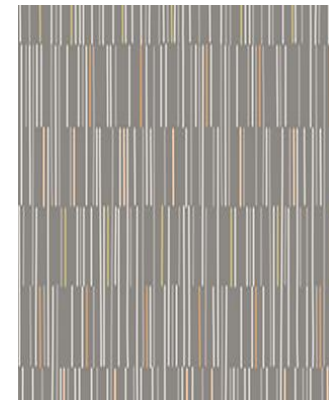
Breeze Bungalow 3044



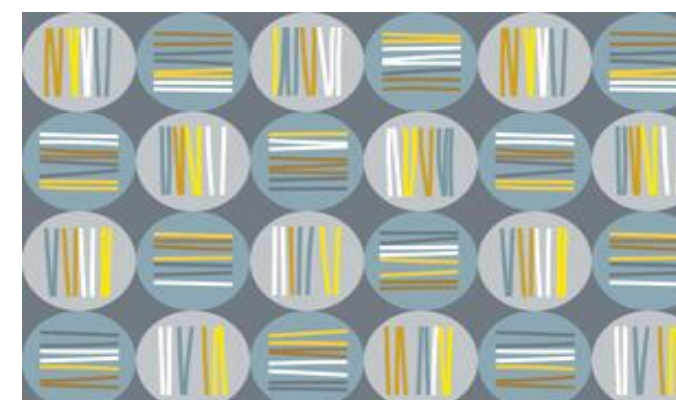
Garden Party Heather 3147



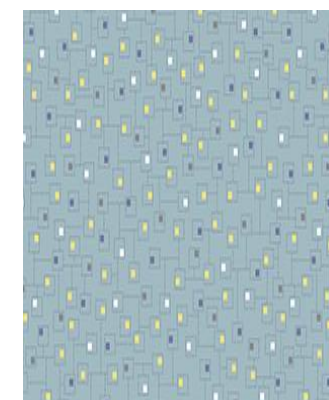
Tranquil Feng Shui 3345



Holistic Vanilla 3176



Balance Bento 3001



Synergy Wisdom 3316



Harmony Interlude 3388

*Consult **EnviroLeather™** Customer Service at (866) 332-0700 to find out how pattern colorways can be modified to a color to meet your specification with a 35 yard minimum order.

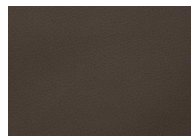
California



Lagoon 947



Snowy Owl 965



Mammoth 957



Pineapple 920



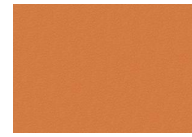
Golden Poppy 958



Linen 998



Solstice 982



Pumpkin 930



Adobe 932



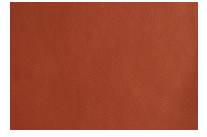
Desert 931



Camel 941



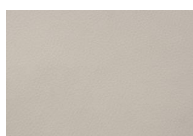
Cinnamon 979



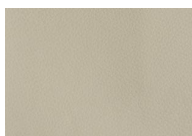
Bolero 986



White 970



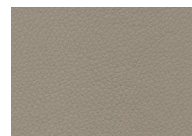
Silver Lake 953



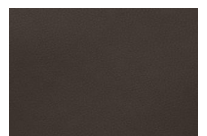
Misty Gray 939



Smokewood 937



Cross Grove 999



Bark 938



Olive 924



Pear 922



Mushroom 946



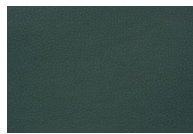
Flagstone 940



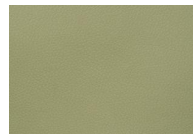
Pewter 942



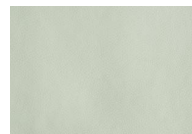
Storm 960



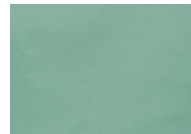
Juniper 952



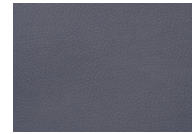
Sherwood 948



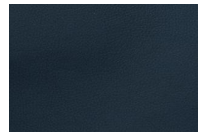
Rain 971



Bermuda 945



Grapevine 956

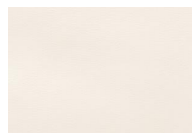


Navy 936

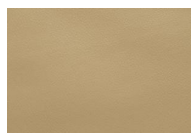
Ink-Gard Plus



Slate 611



Cotton 603



Haze 608



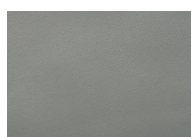
Olive Moss 609



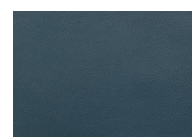
Harvest 607



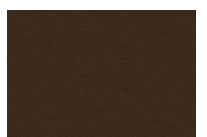
Saddle 616



Sterling 613

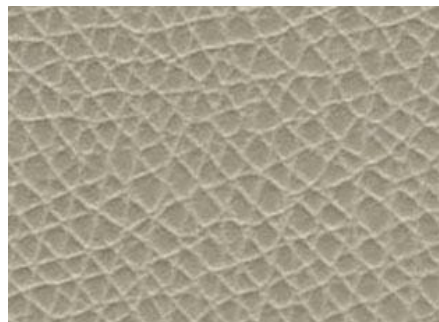


Deep Sea 604

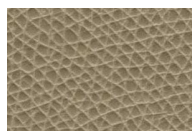


Weatherwood 615

Berkshire



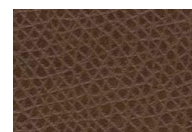
Alabaster 102



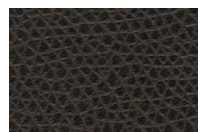
Coquina 105



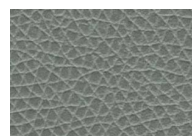
Pumice 104



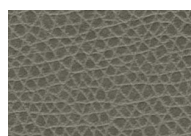
Soapstone 108



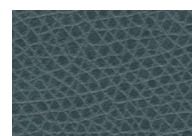
Basalt 109



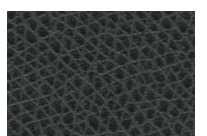
Shale 106



Claystone 103



Limestone 107



Granite 101

Montana



Montana Moss 744



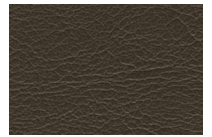
Gypsum White 712



Moccasin Trail 709



Ranchwood 736



Chocolate Moose 750



Bear Grass 746



TeePee 735



Quarry Rock 739



Charcoal 704



Blue Heron 740



Tribal Teal 738

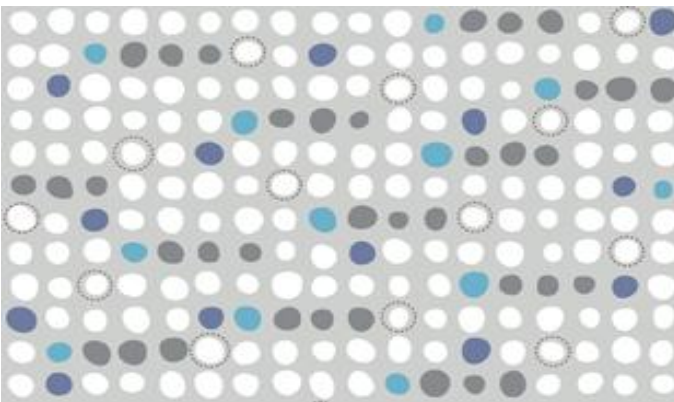


Grizzly Gray 752

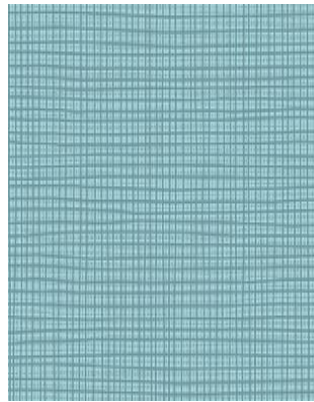


Rocky Mt. 707

Healing Essentials Collection



Droplet Reflection 3088



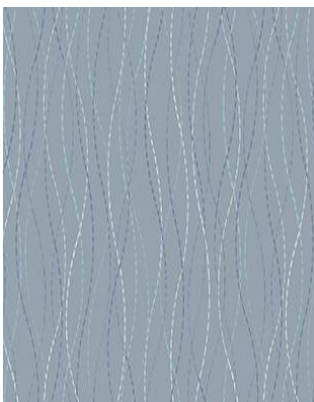
Meditate Bliss 3203



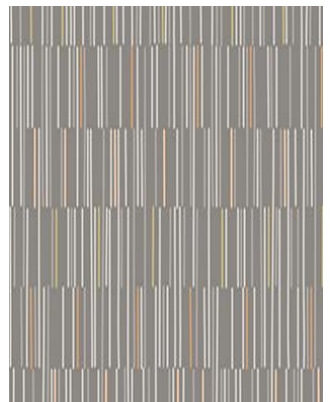
Breeze Bungalow 3044



Garden Party Heather 3147



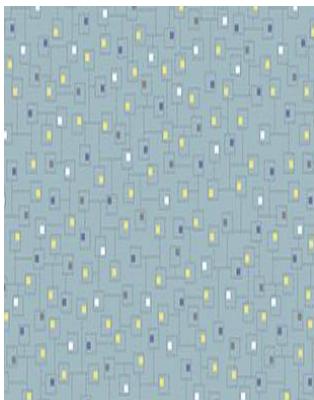
Tranquil Feng Shui 3345



Holistic Vanilla 3176



Balance Bento 3001



Synergy Wisdom 3316



Harmony Interlude 3388

*Consult **EnviroLeather™** Customer Service at (866) 332-0700 to find out how pattern colorways can be modified to a color to meet your specification with a 35 yard minimum order.